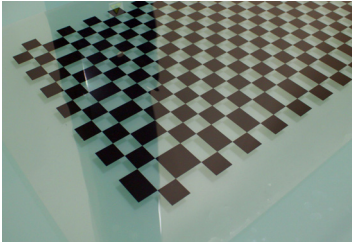


Planar Range Options

High Speed Integrated 2D & 3D Measurement System



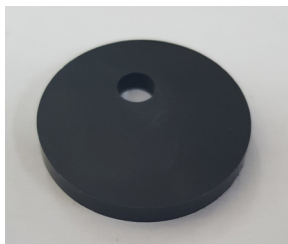
Planar 2D Calibration Sheet

For recalibration of system after environmental changes such as voluntarily moving the system or involuntary movement. Essential for those who are required to carry out periodic recalibration as part of their quality processes.



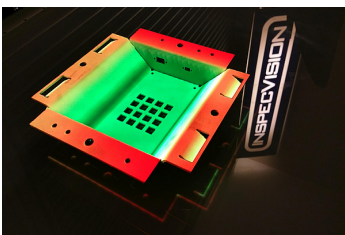
Bar Code Scanner

Allows the user to associate a barcode with the location of the CAD file or part program for automated inspection of parts without interacting with the computer. Over 20 further parameters can be associated with the barcode, such as where to save the report, the report type, tolerance table, part thickness, customer name, etc.



ISO10360 Disk

UKAS Accredited test disk based on 2D version of sphere used within the 3D CMM 'R' test in ISO 10360-4. Used to test final accuracy of Planar system after set up and calibration or for annual recertification and traceability.



Surf-Scan -2.5D inspection

Items which can be inspected include, heights, angles, flatness and cross-sections. The 3D scan data can also be exported and merged for use with 3D inspection software.

The SurfScan is also capable of providing Augmented Reality feedback to highlight good or bad parts, part numbers when multiple parts are measured, or the deviations of the parts profile.



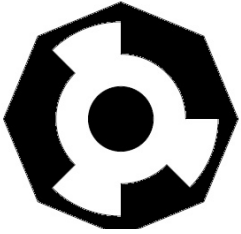
Area of Interest (AOI)

Allows the Planar system to measure the part's surface features in 2D using light from above. The AOI option can measure features such as countersinks, blind holes, pins/inserts, bevels, slots or printed details.



KVM Stand for Keyboard, Monitor and Mouse

Provides a robust stand for keyboard, monitor and mouse making it suitable for positioning directly on the factory floor. Optional for models P17.12, P43.100 and P70.20) Included in machine price for models P110.25, P150.35, P220.35, P360.35L and P370.50



2D Repositioning with Automatic Lights

With this option the Planar system can use optical markers to automatically leapfrog/stitch 2D scans allowing parts larger than the table to be easily measured. By installing an LED ring around the camera lens retro-reflective photogrammetry markers can then be used to automatically determine the movement of a 2D part under the camera. This information is then used to automatically stitch two 2D scans together.

12 photogrammetry markers are included with the kit allowing the user to measure extremely large parts with a relatively small table. The photogrammetry markers are designed to be accurately located ensuring the highest possible accuracy.

They can be supplied with a magnetic or nanotech rubber backing to ensure secure adhesion to the component without leaving any residue.

Automatic Unfolding

The Planar system will compare the 2D shape of a part to its 2D CAD file, but what happens if the 2D CAD file has a mistake? With this option the Planar software can use the original 3D CAD file of the folded part to inspect the flat 2D blank!

AutoPOL is the industry leader in unfolding software. By integrating AutoPOL into the Planar software 3D CAD files can be unfolded using a variety of methods such as by material, k-factor and even your own tooling database. This information is then used to unfold the original 3D CAD file back into the correct 2D shape. This 2D shape is then used to inspect the 2D blank.

Also works with 3D CAD files of 2D parts.

With this option the Planar software can load the following 3D file formats (ACIS, Catia v4/5, Creo/ProE, IGES, Inventor, NX/Unigraphics, Parasolid, SolidWorks, STEP).



Computer Upgrade Option

Better and faster PC. PC specification can be provided at the time of purchase.

*computer upgrade not available with retrofit Opti-Scan option.



Opti-Scan 3D Option (Automated /Manual)

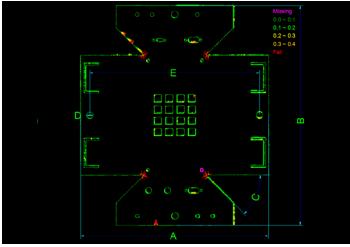
Retrofit module that transforms the 2D Planar machine into a complete 2D and 3D scanning system. Provides the operator with the ability to measure both surfaces and edges within seconds. The option bolts onto the side of the existing Planar light table, alternatively it can be supplied as a stand alone tripod for easy conversion into a portable 3D scanner. Includes full measuring software and basic inspection and reverse engineering software** and Computer Upgrade Option. Requires 1 additional day of training. Opti-Scan 3D option is available for the majority of Planar models. Further details available on request.

**does NOT include 3rd party Point Cloud to Solid Model Inspection and Reverse Engineering software.



Optional Base Unit (suitable for P43.100, P17.12, P70.20)

Base unit for under the machine to house the PC and bring the machine to a working height level. Customers may also use their own table or base unit.



Off-line Software (Dongle)

An offline license supplied with a dongle. The software can be installed on as many computers as you like but used on only one at a time.

Allows the user to fully utilise inspection files (Planar files and CAD files) outside of core Planar system, thus reducing 'down time' of inspection machine itself. Option is for one additional seat but additional seats can be chosen at time of purchase (or added later). Software licence is permanently linked to the PC it is first installed on and is not transferable to any other PC at a later date.

Geomagic Control X / Geomagic Control X Essentials

Geomagic Control X is an advanced 3D inspection software package. Geomagic Control X can compare scans of 3D parts (3D point clouds) to their nominal CAD files to create 3D inspection reports. The inspection reports can also be created if no CAD file exists.

For 3D reverse engineering alternative applications can be provided at an extra charge.

Geomagic Control X is one of many advanced 3D inspection packages. Geomagic Control X Essentials is a more affordable software package which uses the same, well known interface as the standard version of Control X.

Both Geomagic Control X and Geomagic Control X Essentials can be purchased via 3D Systems or a local 3D Systems representative.



Software Upgrades and Technical Support (1 Year)

Provides the user with the security of knowing that they will always have the most up-to-date software available to enable the most effective use of their Planar system.

Also provides full software and hardware after-sales support*** to fully trained operators (intermediate and advanced) in English via email, phone or internet during GMT office hours (Mon-Thurs: 8.30am to 5.00pm and Fri: 8.30am to 1.00pm).

Requires the user to have high speed internet connection. Back-to-back annual subscription recommended. Any lapsed years must be purchased at 50% discount up to a maximum of 3 lapsed years. The following year's support must be purchased in full at time of lapsed year(s) purchase.

***does not include part replacement – see Warranty bundle



Software Upgrade, Technical Support and Warranty Bundle (1 Year)

Provides hardware warranty and software upgrades & support.

The warranty extension requires software updates as replacement hardware items may not be compatible with older versions of the software.

The warranty extension is a percentage of the hardware cost.



InspecVision Ltd.

10 Trench Road • Mallusk • Newtownabbey • Co Antrim • BT36 4TY

Tel: +44 (0)28 9084 4012 • Fax: +44 (0)870 706 16 14

Email: sales@inspecvision.com • Web: www.inspecvision.com